

Mutt (adult)

Love is the best pedigree any dog could have! Whether she's big or small, scruffy or sleek, silly or sophisticated, a Mutt's "multi-flavor" background simply adds to her winning charm.



1 Using the Mutt (adult) template on page 132, score the folding lines, then cut along all the solid lines, including the eyes, the nose, and the tabs for the interlocking joint, as depicted in "How to Use This Book" on pages 7–13.

2 Fold down the ears a little toward the face. Fold down the cheeks, then the beard **(A)**.

3 Fold down the neck behind the head while you valley fold the top of the head **(B, C)**.

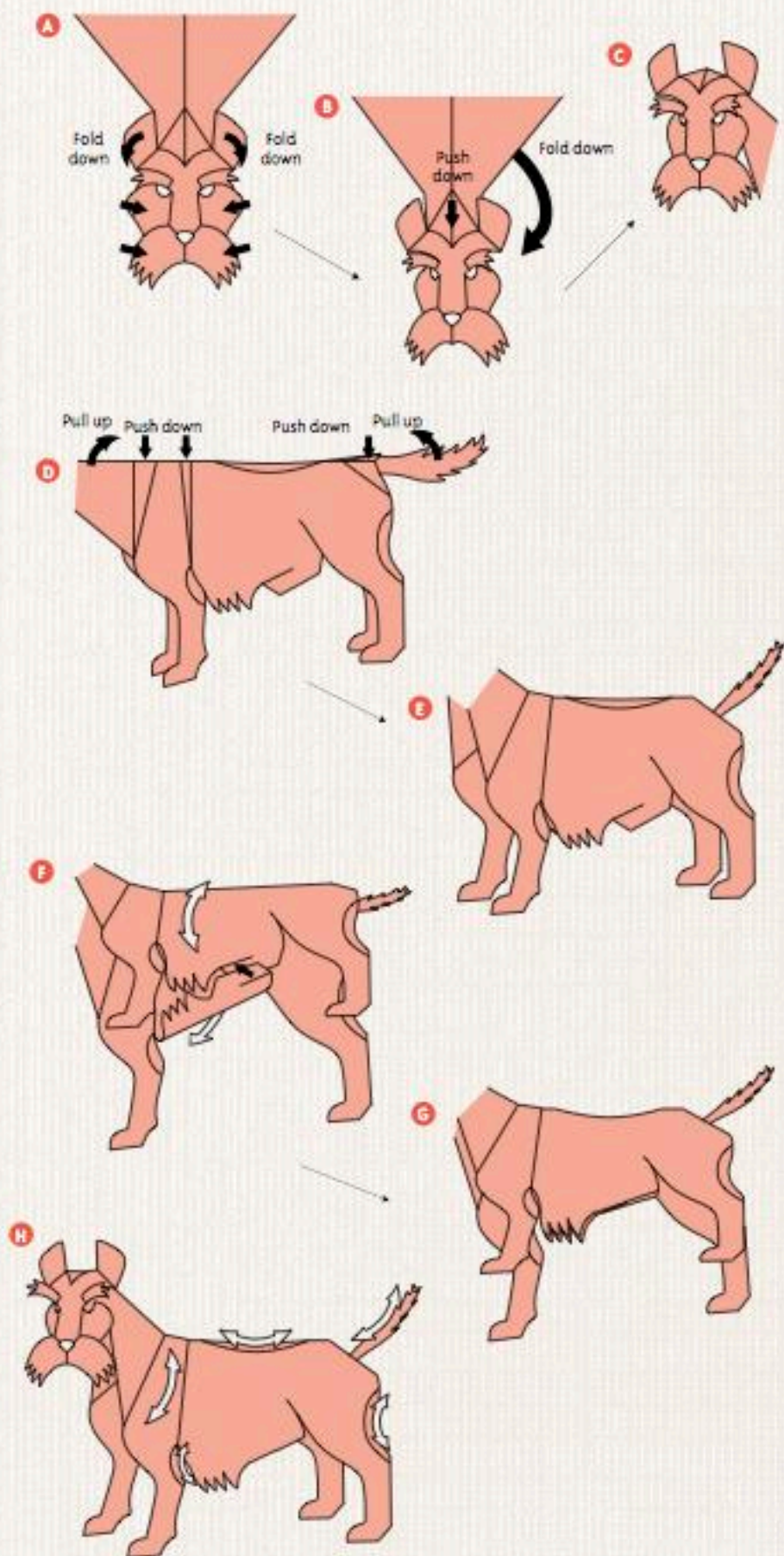
4 Fold the body in half by following the scored centerline. Pocket fold the neck, the shoulders, and the tail **(D, E)**.

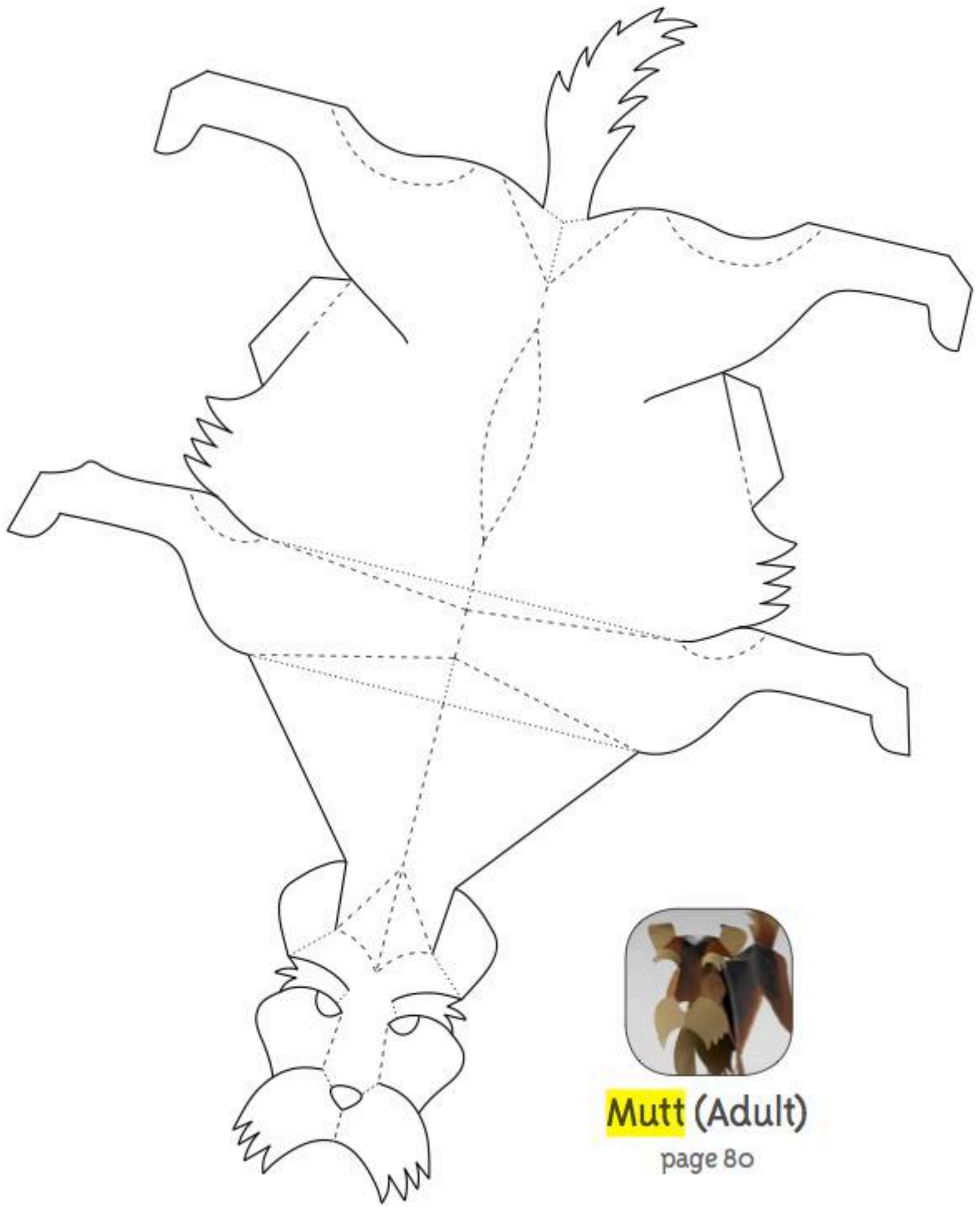
5 Round the body by rolling it over a dowel. Interlock the stomach joint by crossing the tabs **(F, G)**.

6 Add more curve to the back by pushing it down. Round the shoulders by rolling them over a dowel. Curl the tail. Fold the front and hind legs by following the scored lines **(H)**.

TIP

No two dogs look the same, and Mutts surely come in all shapes and sizes! Add color and pattern to your Mutt by referencing the project photo, or celebrate your pup's unique appearance by personalizing her look with individual color and embellishment.





Mutt (Adult)

page 80