

Flower Power

A bouquet of flowers can be used to represent a bridal bouquet on a unique card for a very special couple. Customize a handmade bouquet to replicate the colors of the wedding for a truly personal touch. The interlocking hearts hanging on the inside of the card are perfect for a heartfelt message.



Flower Power

TOOLS & MATERIALS

- 5¾" (14.6 cm) square envelope
- Adhesive roller
- Cellophane tape
- Craft scissors
- Die cuts: hearts (4)
- Foam adhesive
- Hole punch: ⅛"
- Paper: cream, white
- Paper punches: flower, heart, leaf
- Paper scraps: blues (2 shades), greens (2 shades), red (2 shades)
- Pencil
- Ruler
- Thread: white



HOW-TO

CREATE THE BOUQUET

1. Cut the rough shape of a bouquet from green paper. Punch flowers from various colors of paper and leaves from green paper. Cut and layer thin contrasting green stems on the base and add flowers and leaves, securing them with the adhesive roller. Occasionally raise a flower with foam adhesive to add dimension.



2. Complete the bouquet with a blue wrapper attached over the stems and raised with foam adhesive. Finish the wrapper with tiny circles punched from white paper for the buttons.

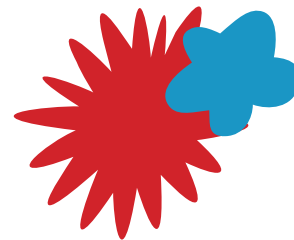
CREATE THE CARD

3. Cut the card from white paper (see Pattern 5A) and accordion-fold on the crease lines. Cut the card cover $\frac{1}{4}$ " (0.6 cm) larger than the card from cream paper (see Pattern 5B). Cut a cream mat $\frac{1}{2}$ " (1.3 cm) smaller than the cover and fasten the bouquet to it with foam adhesive; center and adhere it to the cover with the adhesive roller.

EMBELLISH THE INTERIOR

4. Create hanging hearts by sandwiching thread between matching heart die cuts. Attach the hanging hearts with cellophane tape to the backside of the inside card, positioning them to hang inside the square opening.

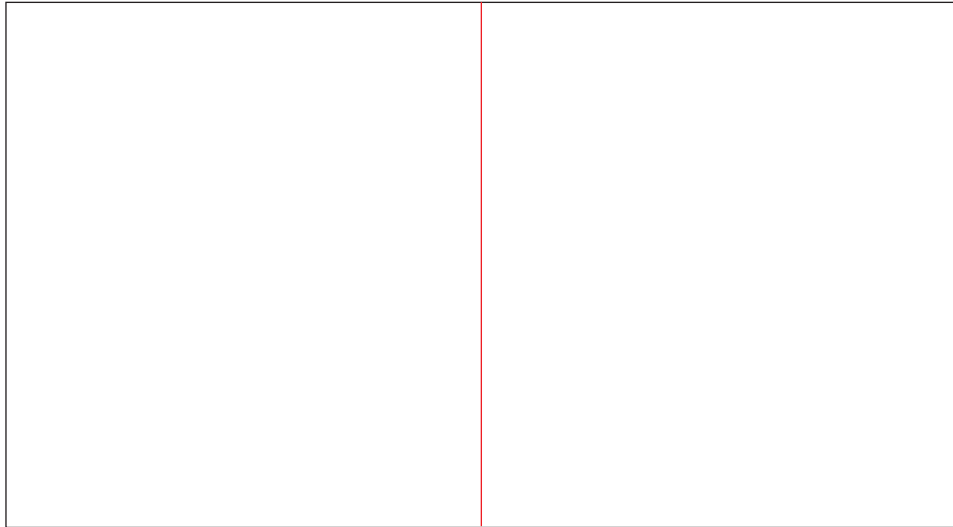
5. Fasten the top and bottom panels of the card to the cover using adhesive roller.
6. Cut the stripe and dot embellishments out of white paper to decorate the inside of the card. Finish the inside with two hearts cut from different shades of red paper secured to the bottom panel.



IN OTHER WORDS . . .

- Congratulations
- With Sympathy
- Thinking of You

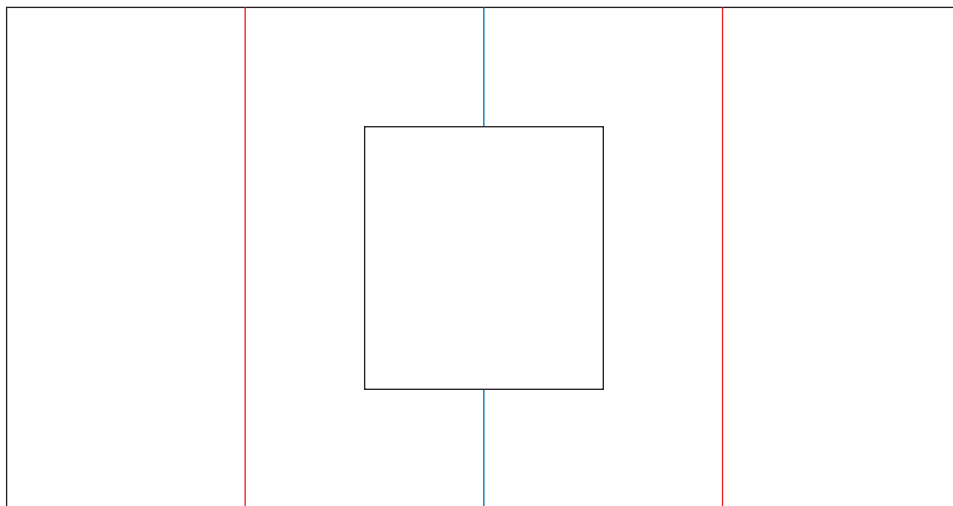




Pattern 5A (enlarge 200%)

LEGEND

- Black = Cut Line
- Blue = Mountain Fold
- Red = Valley Fold



Pattern 5B (enlarge 200%)