

# flowers I



FRIEDA ANDERSON ● WOODLAND SECRETS, 2010 ● 43 x 43 inches (109.2 x 109.2 cm) ●  
Cotton and silk; hand dyed, machine appliquéd, machine quilted ● Photo by artist



ANDREA M. BROKENSHERE ● JEANENE'S SWEETIE PEAS, 2010 ● 40 x 29 x ¼ inches (101.6 x 73.7 x 0.6 cm)  
100% silk, 100% cotton; hand-painted appliquéd, free-motion machine quilted ● Photo by artist



MAIJA BRUMMER ● PRIMAVERA, 2005 ● 40 x 40 x 3/16 inches (101.6 x 101.6 x 0.5 cm) ● 100% cotton surface and backing; hand dyed, hand painted, free-motion machine embroidered ● Photo by Sirpa Pollanen



GEORGIE CLINE ● WHOLE I: YELLOW FLOWERS I, 2004 ● 39 x 29 inches (99.1 x 73.7 cm) ● Cotton- and silk-blend commercial and hand-dyed fabric, tulle, acrylic paint, metallic fabric paint; machine appliquéd ● Photo by artist



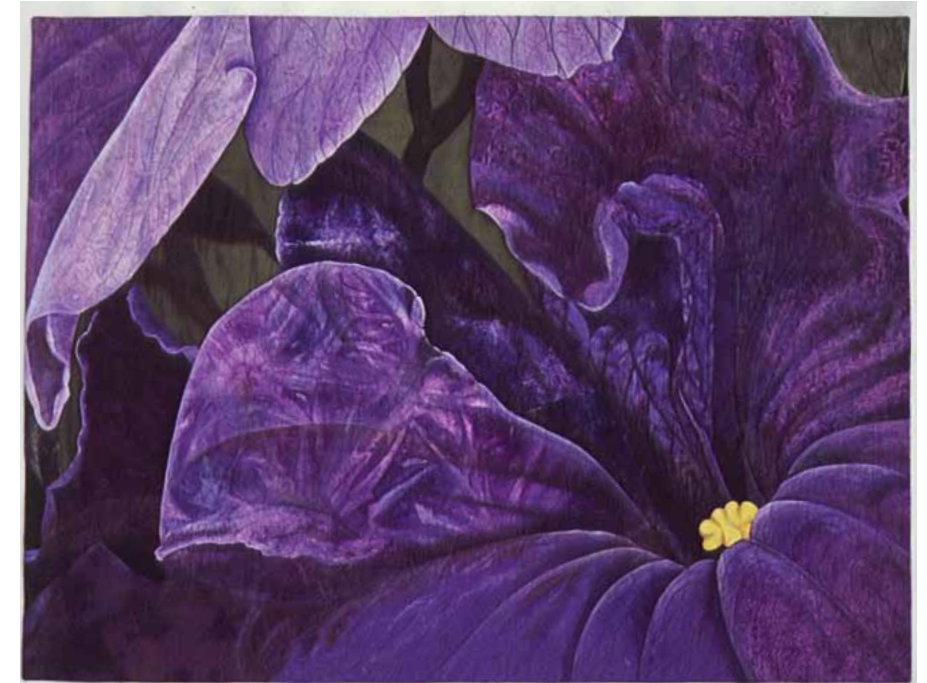
DEBRA DANKO ● PINK ORCHID, 2006 ● 36 x 49 inches (91.4 x 124.5 cm) ● Cotton fabrics, shibori cotton fabric, cotton batting; painted, fused, hand dyed, machine quilted ● Photo by artist



RUTH DE VOS ● SOLOMON..., 2007 ● 58½ x 71⅞ inches (148.6 x 181.5 cm) ● 100% cotton, dye; hand dyed, machine pieced, machine quilted ● Photo by Victor France



MELINDA BULA ● RAIN DROPS, 2010 ● 23 x 25 inches (58.4 x 63.5 cm) ● 100% cotton fabrics (some hand dyed by the artist), rayon thread; thread painted, fusible appliqué ● Photo by artist



DEBRA DANKO ● BIG PETUNIAS, 2005 ● 39 x 52 inches (99.1 x 132.1 cm) ● Cotton fabrics, layered silk organza, cotton bating; painted, machine appliquéd, hand dyed, machine embroidered, machine quilted ● Photo by artist



PAMELA ALLEN ● ODD GARDEN, 2010 ● 43 x 43 inches (109.2 x 109.2 cm) ● Cotton and silk; hand dyed, machine appliquéd, machine quilted ● Photo by artist

# flowers II



BETH WHEELER ● LABYRINTH, 2008 ● 30 x 24 x 1 inches (76.2 x 61 x 2.5 cm)  
● Cotton twill, fleece batting, photograph; computer manipulated, printed, free-motion machine stitched ● Photo by artist

DEBORAH SCHWARTZMAN  
● JUICY FRUIT, 2003 ●  
38 x 58½ inches  
(96.5 x 148.6 cm) ●  
Silk, cotton, rayon, organza,  
polyester, silk thread; hand  
stamped and dyed, machine  
pieced, hand and machine  
quilted, machine embroi-  
dered, embellished, fused  
● Photo by John Carlano



RITA STEFFENSON ●  
TWILIGHT, 2008 ● 79 x  
108 x ¼ inches (200.7 x 274.3  
x 0.6 cm) ● 100% cotton,  
fabrics dyed and painted by  
the artist; machine appli-  
quéd, machine quilted ●  
Photo by Kevin Steffenson



SMADAR KNOBLER ●  
 MAJESTIC LEYA, 2010  
 ● 25 x 32 x 4 inches  
 (63.5 x 81.3 x 10.2 cm)  
 ● 100% silk, 100% cotton,  
 paint, wire; machine pieced and  
 quilted ● Photo by artist

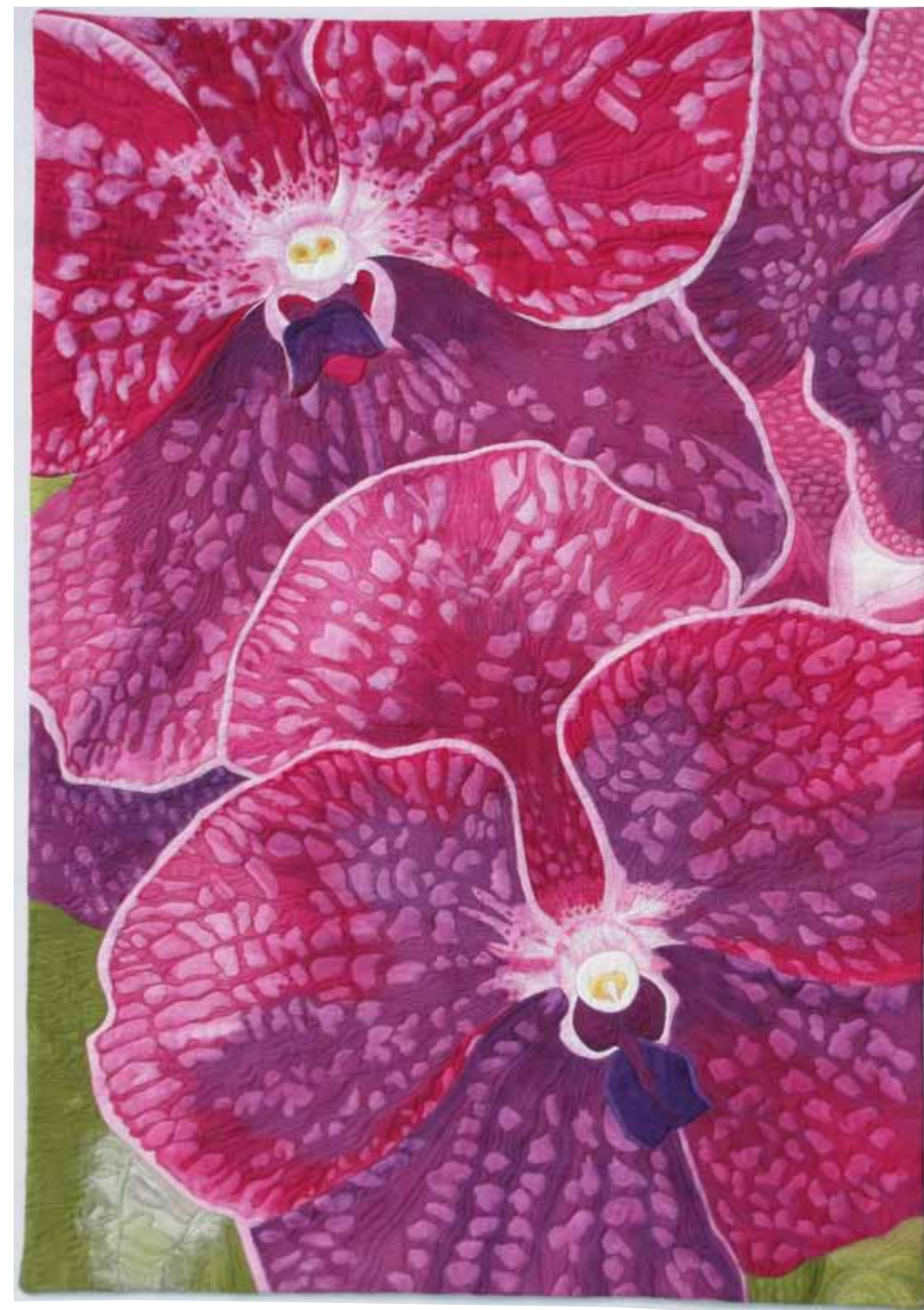
KATHLEEN MCCABE ●  
 PROTEA, 2009 ● 31 x 41 inches  
 (78.7 x 104.1 cm) ● 100% cotton,  
 commercial fabrics; fused and  
 machine appliquéd, machine  
 quilted ● Photo by Phil Imming



ELSBETH NUSSER-LAMPE ● STRUGGLE, 2010 ● 43 x 43 inches (109.2 x 109.2 cm) ● Cotton and silk;  
 hand dyed, machine appliquéd, machine quilted ● Photo by artist



JUANITA YEAGER ● LILIES IN BLOOM, 2009 ● 45 x 38 inches (114.3 x 96.5 cm) ● Silk broadcloth; dye painted, machine quilted ● Photo by artist



SUSAN BRUBAKER KNAPP ● FRECKLES, 2010 ● 35 x 24½ x ¼ inches (88.9 x 62.3 x 0.6 cm) ● White cotton fabric, acrylic textile paint, cotton threads, wool polyester batting; whole-cloth painted, free-motion machine quilted ● Photo by artist