

SABINE LIPPERT'S BEADED FANTASIES

30 Romantic
Jewelry Projects



**"This book is amazing! It's one you'll
keep out on your desk at all times."**

— Suzanne Golden

SABINE LIPPERT'S
BEADED FANTASIES

30 Romantic Jewelry Projects





56



51



24



69



74



100



85



96



40



48



21



111



60



66



18

CONTENTS

INTRODUCTION 8

CHAPTER 1: SUPPLIES AND TECHNIQUES 10

CHAPTER 2: EMBELLISHED BASES 17

Art Deco Necklace 18

Cubic Dots Bracelet 21

Little Lantern Earrings 24

RAW Ribbs Bracelet 26

Grace Bracelet 30

Verticals Bracelet 33

XXOXX Bracelet 36

CHAPTER 3: BEZELED STONES 39

Les Fleurs Necklace 40

La Fleur Bracelet 45

Queenie Bracelet 48

Medal Pendant 51

Petit Carré Choker 56

Floral Cascade Choker 60

Sweet Eighteen Earrings 66

Amazon Jewel Pendant 69

Double Star Earrings 74

Milady Pendant 77



26



121



104



82



107



88

CHAPTER 4: A QUESTION OF ARCHITECTURE..... 81

Cher's Earrings..... 82
 I Can't Dance Earrings 85
 Three Crosses Necklace..... 88
 Scheherezade Pendant..... 91
 Aisha Earrings 94
 Nathalie Pendant 96
 Scheherezade Bangle 100



91



36



118

CHAPTER 5: PEARL CENTERS..... 103

Spikey Tops Bracelet.....104
 Volcanoes Necklace 107
 Purple Rope Necklace..... 111
 Granada Brooch 115
 Granada Earrings 118
 Sparkling Tops Necklace..... 121



33



94



30

**CHAPTER 6: SABINATION NATION,
 OR HOW ONE BEADER APPROACHES DESIGN124**

Gallery131
 Author Gallery138
 About the Author142
 Acknowledgments.....142
 Index.....143



115



45



77



LES FLEURS NECKLACE

This necklace is made of little flowers in two different sizes. Simply combine them any way you like. The overall V shape creates a perfect fit because the links between the flowers are straight. After building a flower, connect it with a link to the previous ones. All the links are made in the same way, except for those in the middle, which are a bit shorter.

► Overview

The flowers are joined with links of 11° seed beads that are worked from a ring of seed beads on the back side of the flowers. The small flowers have a ring of 10 size 11° beads, and you can work the link from any of them. Just make sure the flowers are linked in the same position. The large flowers end with a ring of five arcs with one 11° between six 15°, and you'll work the links from one of the 11°. Because there is an odd number of arcs, the necklace will curve—you'll have one more arc between the links on the outside of the curve than on the inside.

The instructions for making the Small Flowers, the Large Flowers, the Long Links, and the Short Links appear below. Bead the flowers and links in the following order:

- Make a Small Flower with a Long Link with a loop of seven size 11° seed beads. This loop will be used to attach one half of the clasp.
- Make another Small Flower and add it to the previous one with a Long Link.
- Make a Large Flower and add it to the previous flower with a Long Link.
- Make a Small Flower and add it to the previous flower with a Long Link (three arcs on the back side of the Large Flower on one side and two arcs on the other side).

SUPPLIES

87 copper glass pearls, 3 mm

87 red crystal bicones, 3 mm

Size 15° seed beads:

Dark bronze, 5 g

Golden, 4 g

Size 11° bronze seed beads, 8 g

9 deep red chatons, 8 mm

6 deep red rivolis, 14 mm

18 pale beige AB crystal bicones, 4 mm

2 copper split rings, 6 mm

1 copper lobster clasp, 7 mm

FireLine, smoke, 6-pound test

Size 12 beading needle

Small sharp scissors

2 pairs of flat-nose pliers

FINISHED SIZE

18 inches (45.7 cm),
not including clasp

A large flower flanked by small flowers



- Make another Large Flower and add it to the previous flower with a Long Link.
- Make a Small Flower with a Long Link and add it to the previous Large Flower, taking care that the two- and three-arc sides are positioned as for the previous Large Flower—there will be two arcs on the inside and three arcs on the outside.
- Make another Large Flower with a Long Link. This is the first of the three flowers in the centerpiece.
- Add a Small Flower with a Short Link, but this time place two units of the Large Flower on the outside and three units on the inside.

- Make another Large Flower with a Short Link and attach it to the top of the Small Flower of the centerpiece, right next to the other link on this flower.

Make the rest of the necklace by reversing the order previously described, mirroring the first half. There's an additional Short Link between the two Large Flowers in the centerpiece and half a Short Link at the bottom of the Small Flower (figure 1).

► Small Flower

1 Refer to figure 2 for steps 1 through 3. String one round bead and one 3-mm bicone; repeat four more times, for a total of 10 beads strung. Pass through the first bead strung to create a ring, and weave twice through all the beads to secure the thread. The thread exits a round bead.

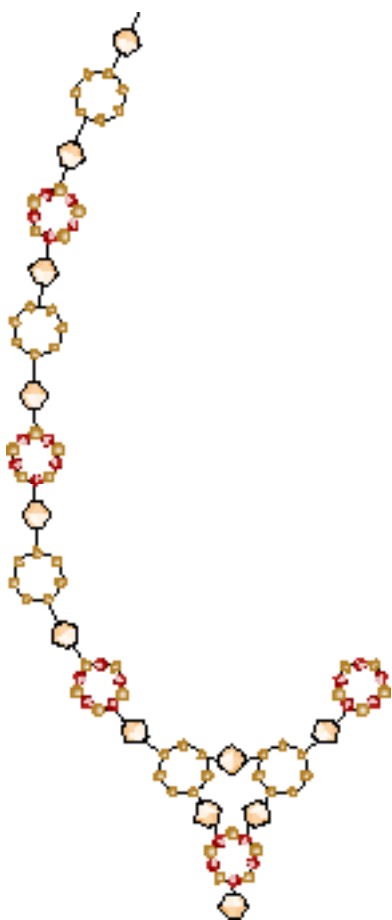


figure 1

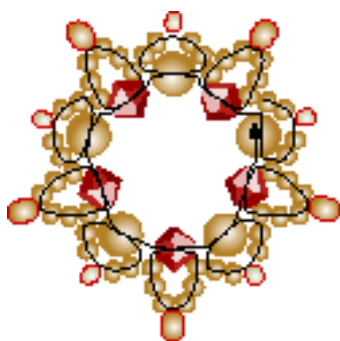


figure 2

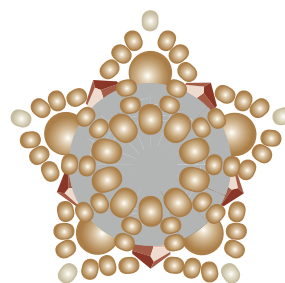


figure 3

2 String four dark bronze 15°s and pass again through the round bead, forming an arc. Pass through the next bicone, string six dark bronze 15°s, and pass again through the bicone, forming another arc, then pass through the next round bead. Repeat these steps until you've beaded around the entire ring. At the end of the row, weave forward so the thread exits the second bead in the first group of four 15°s added in this row.

3 Pick up one golden 15°; weave through the third and fourth 15°s in this arc and the first three 15°s in the next arc. Pick up one 11° and weave forward until you reach the middle of the next arc of four size 15° seed beads. Repeat these steps until you've beaded your way around the entire ring (outlined in red in figure 2). At the end, weave forward so the thread exits a size 11° seed bead.

4 Pick up one 11° and pass through the 11° in the next arc above the next bicone. Repeat four more times, then pass again through the 11° from which the thread exited. Pull the thread to form a ring of the 11°s; all the large arcs are connected to this ring. This is the back side of the bezel. Loosen the thread and place one chaton face down into the bezel. Again pull the thread up tight and weave

several times through the ten 11°s to secure the thread (figure 3). The links are worked from and attached to this ring of ten 11°s on the back of the bezel.

► Large Flower

1 This flower is beaded in the same way as the Small Flower, but the bead count is a bit different. For the first row string one 3-mm bicone and one round bead; repeat six more times for a total of 14 beads on your thread. Form a ring as in Small Flower step 1.

2 Build the smaller arcs (four dark bronze 15°s) at the round beads and the larger arcs (six dark bronze 15°s) at the bicones as described in Small Flower step 2. In the next step, add *three* golden 15°s in the middle of the small arcs (not one as shown for the Small Flower) and one 11° in the middle of the large arcs. The thread exits the size 11° seed bead of a large arc.

String three 11°s and pass through the size 11° in the next arc above the next bicone. Repeat six more times to complete the ring. Place the rivoli face down in the bezel, and weave through all the beads in the ring of 11°s to secure the thread. End with the thread exiting the middle 11° in a set of three added in the last row.



Small flower

3 Pick up one 11° (outlined in green in figure 4), skip three beads, and weave through the fourth (this is the middle of the next set of three 11°s added in the last row). Repeat six more times. End with the thread exiting the first bead added in this row.

Pick up two golden 15°s and pass through the next 11° added in the previous row. Repeat six more times. Weave several times through the beads of the last row to secure the thread.

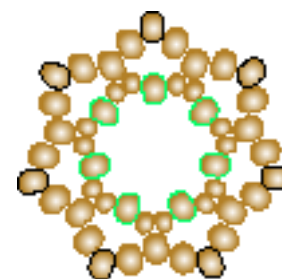


figure 4

► Long Links

The links are made with a variation of RAW stitch. Note that the 11° seed bead at the beginning and the end of the links is also one bead on the back side of the flowers (outlined in red in figure 5).

1 Refer to figure 5 for this step. Bead two units of RAW using 11°. For the next unit, string one 11°, one 4-mm bicone, and three 11°s; pass back through the bicone, pick up one 11°, and pass again through the 11° seed bead from which the thread exited at the beginning of this step. Weave forward so the thread exits the middle 11°

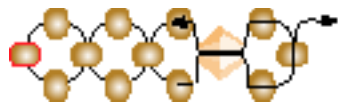


figure 5

seed bead in the group of three on the other side of the bicone. Add two more units of RAW made of 11°s.

2 Weave along the exterior of this link and (starting from the seed bead shared with the flower) add between the beads one golden 15°, one size 11° twice, and four dark bronze 15°s at the bicone, then one size 11° twice and one golden 15° (beads are outlined in black in figure 6). Repeat on the other side of the link. Weave a second time along the exterior and add one golden 15° in the middle of the four dark bronze 15°s (outlined in green in figure 6).

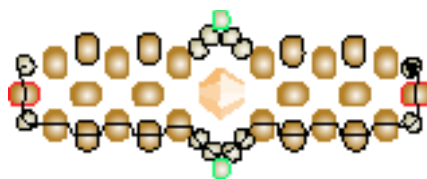


figure 6

► Short Links

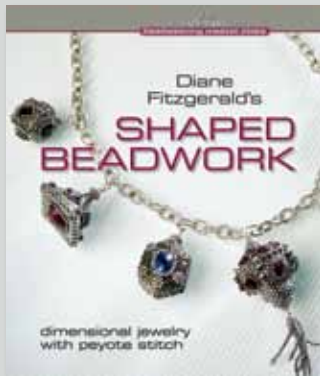
Follow Long Links steps 1 and 2 to build the Short Links, but begin and end with one unit (not two) of RAW made from 11°. To make the half link at the bottom of the centerpiece, start with two units in RAW, but don't add RAW units after the bicone (just the three beads as shown in figure 5).

► Attach the Clasp

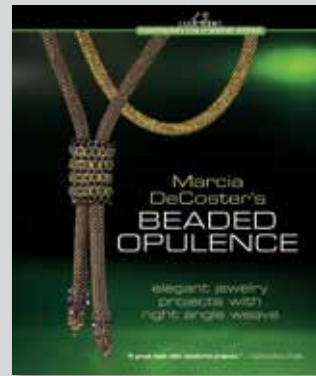
Add a jump ring to one of the seven-bead loops and use the other jump ring to attach the clasp to the other seven-bead loop.



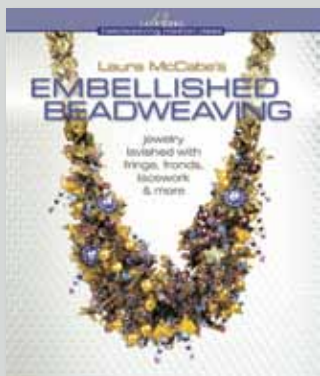
THE ESSENTIAL LIBRARY OF BOOKS FOR BEADERS



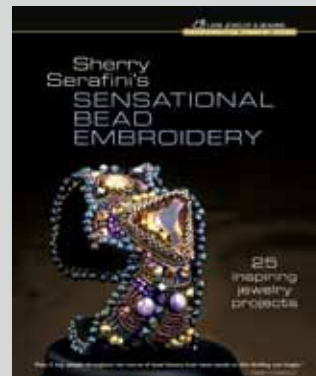
Diane Fitzgerald



Marcia DeCoster



Laura McCabe



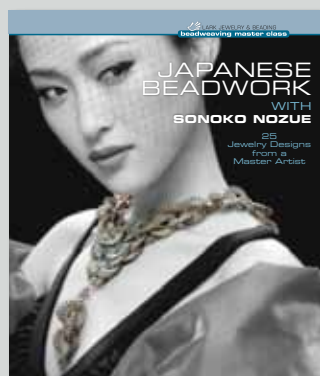
Sherry Serafini



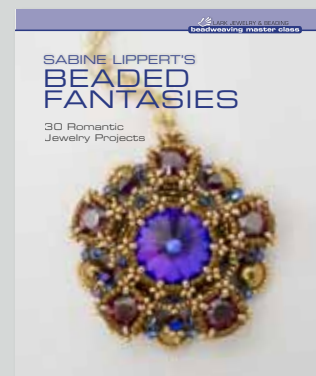
Maggie Meister



Rachel Nelson-Smith



Sonoko Nozue



Sabine Lippert

SABINE LIPPERT'S BEADED FANTASIES

Leading European beader and teacher Sabine Lippert makes your beaded jewelry fantasies come true! This special book in the Beadweaving Master Class series includes Sabine's most dazzling and romantic designs, from a sparkling pendant of golden rivolis and large deep-green pearls to a necklace featuring a netting of silver seed beads that enfolds pale violet pearls and eggplant-colored beads. Her beautiful, inventive projects evoke the Gilded Age—but with contemporary, wearable designs for today's beadworkers. All of the pieces are made using the most popular stitches in beadwork: peyote and right angle weave. Sabine completes her Master Class by describing her approach to design and presenting gallery images of her own work, as well as jewelry from some of the artists she most admires, encouraging you to branch out in your own beadwork!

Praise for *Sabine Lippert's Beaded Fantasies*

"Sabine Lippert's use of pearls, crystals, and seed beads, with innovative thread paths, results in beautifully encrusted jewels that are infinitely wearable. The way she shares her design approach of evolving pieces of beadwork into a variety of designs encourages readers to take their own design journeys. We can be thankful that Sabine's long craft history led her to beads." — **Marcia DeCoster**

"Every so often a beader comes along who just stands out from the crowd. When I first saw Sabine's work, I knew it was very special. She's the kind of artist who brings a mastery to her work and raises the bar for all beadworkers. Unique, amazing, gorgeous, stunning, glamorous, elegant—all of these words describe Sabine's book. Every piece is exquisite and beautifully made and will have beadworkers wanting to make every one. The problem will be in deciding which to make first!" — **Suzanne Golden**

"Sabine Lippert is one of the most innovative bead artists. She was truly inspired with this amazing book! The projects are fabulous and the how-to illustrations are perfection. I believe people will want to create these projects over and over again, playing with various colorways. This book is destined to be in every bead artist's library and referred to repeatedly." — **Sherry Serafini**

"From my first glance at Sabine's beadwork in 2009, I became a fan. These pages reveal a passion for beadweaving to be reckoned with and a desire to share knowledge with others. Although the projects appear intricate and complex, the simple language and illustrations make for a successful, pleasant experience while beading them. Take it from one who finds following directions challenging—these are indeed easier than they look!" — **Rachel Nelson-Smith**



Sabine Lippert

started her career as a physician. Since discovering high-quality beads, she beads before work and continues after returning home, fascinated by the colors, the sparkle, the shapes, and the endless possibilities. This is her second book. Sabine lives in Bonn, Germany.



Please connect with
Lark Jewelry & Beading
on Facebook:
[facebook.com/
LarkJewelryBeading](https://www.facebook.com/LarkJewelryBeading)