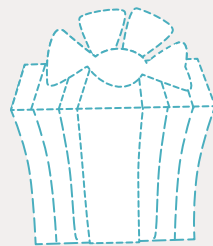


holiday shopping list folio



The holidays are no time to be disorganized. Whip up this indispensable organizer in your most favorite holiday fabrics so you can stay organized and calm, even when frazzled by the shopping hordes.

handmade by **TERRI HARLAN**



fabric & such

Assorted pieces of fabric, at least 2 inches square (5.1 cm)

1 fat quarter (45.7 x 55.9 cm) of linen blend fabric

1 fat quarter (45.7 x 55.9 cm) of cotton fabric (for interior)

1 piece of heavyweight fusible interfacing, 8 x 11 inches (20.3 x 27.9 cm)

Embroidery floss

Elastic band

1 piece of fusible fleece, 8 x 11 inches (20.3 x 27.9 cm)

Button, 1 inch (2.5 cm) in diameter

Notebook, 4 x 7 inches (10.2 x 17.8 cm)

Pen

tools

Basic Patchwork Kit (page 9)

finished size

5 x 7 inches (12.7 x 17.8 cm) when closed

seam allowance

¼ inch (6 mm) unless otherwise indicated

get started

1 Cut out the following pieces from the fabrics.

From fabric scraps: 21 squares, each measuring 2 inches (5.1 cm).

From linen blend fabric:

- 1 piece measuring 9 x 11 inches (22.9 x 27.9 cm).
- 1 piece measuring 3½ x 11 inches (8.9 x 27.9 cm).

From cotton fabric:

- 1 piece measuring 8 x 11 inches (20.3 x 27.9 cm).
- 1 square measuring 5 inches (12.7 cm).

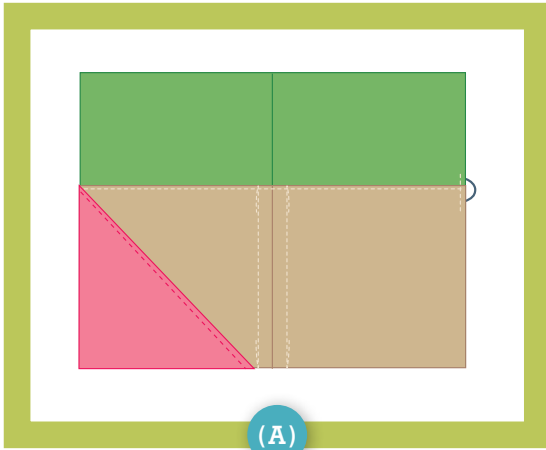
2 Prepare the interior pieces:

- Fuse the heavyweight interfacing to the same size cotton piece, following the manufacturer's instructions. Set aside.
- Fold the remaining cotton piece in half diagonally to form a triangle. This will become the angled pocket on the left side. Set aside.

- Fold the larger linen piece in half to make a 4½ x 11-inch (11.4 x 27.9 cm) piece for the inside pocket. Stitch along the folded edge ¼ inch (6 mm) from the top. Use a disappearing fabric marker to write a message in the bottom right-hand corner, allowing about ¾ inches (1.9 cm) on the bottom and right edges for the seams. Embroider as desired using an embroidery needle and floss.

3 Put together the interior:

- Lay the fused interior piece on a flat surface. Pin the embroidered pocket on top, aligning raw edges on the bottom and sides.
- Fold the interior in half, or measure to find the center point. Use the fabric marker to draw a line ½ inch (1.3 cm) away from the center on both sides (A). Stitch along the drawn lines to form a pen slot, backstitching at the top for extra strength.
- Pin the angled pocket set aside in step 2 in the lower left-hand corner, on top of the linen pocket, aligning raw edges. Baste in place.



- Find the center of the right-hand edge and pin the elastic band at that point. Stitch over the band a few times to secure it, making sure not to stitch over the glued section of the band (this will break your needle).

4 Make the exterior:

- Lay out the 2-inch (5.1 cm) assorted squares in an order that you like, with three rows of

seven squares. Stitch the squares together in rows, then stitch the rows together. Press.

- With right sides together, pin the remaining linen piece to the top edge of the patchwork, matching up the 11-inch (27.9 cm) edges. Stitch and press open. You should now have a large piece measuring 8 x 11 inches (20.3 x 27.9 cm). Square up this piece if needed.
- For a more finished look, topstitch along the linen about ¼ inch (6 mm) from the patchwork.
- Fuse the fleece interfacing to the wrong side of the patchwork, following the manufacturer's instructions. This will make the cover soft and cushioned as well as give it a little structure.
- Match up the exterior and interior to check for the placement of the button. Mark on the exterior piece where the elastic is, and hand sew the button about 1 inch (2.5 cm) from the raw edge at that location.

5 Assemble the list taker:

- Pin the interior and exterior together with right sides facing, the corners aligned, and the elastic tucked between the layers.
- Stitch together on all sides, leaving a 5-inch (12.7 cm) opening on the top edge for turning.
- Turn the pieces right side out through the opening. Use a turning tool to gently push out the corners.
- Press the list taker flat, neatly folding in the seam allowance at the opening.
- Topstitch a ⅛-inch (3 mm) seam around the entire perimeter to close the edges.

6 Insert the 4 x 6 (10.2 x 17.8 cm) notebook and your favorite pen to complete the package.

