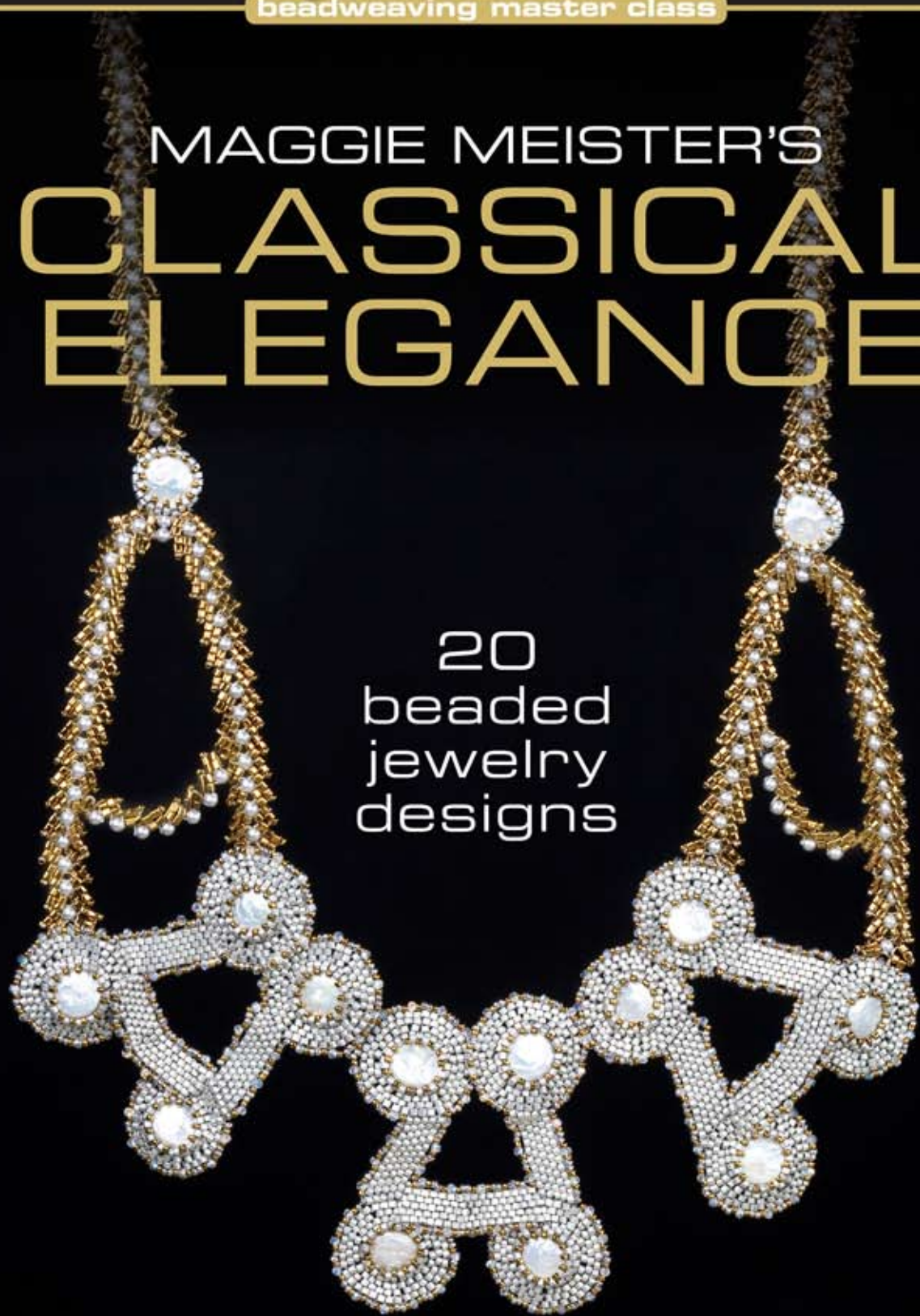




LARK JEWELRY & BEADING
beadweaving master class

MAGGIE MEISTER'S CLASSICAL ELEGANCE

20
beaded
jewelry
designs



"Maggie Meister's Classical Elegance will stand at the head of the pack. It is destined to become a classic."

— NanC Meinhardt



LAKSMI PENDANT

Laksmi is the Hindu goddess of wealth, prosperity, light, wisdom, fortune, fertility, generosity, and courage; she's also the embodiment of beauty, grace, and charm.

A carved ivory statuette of Laksmi was found in a house in Pompeii along with pearls and precious stones from India and records of the Nabatean cults. This pendant is based on that statuette and a photo of an amulet I found in a book about ancient Indian jewelry.

► End Caps

Refer to figure 1 for rows 1 through 14 of the center disc. All rows are worked with cylinder beads in color A.

Rows 1–6 Complete six rows of circular peyote stitch.

Rows 7 and 8 Complete two rows of regular peyote stitch, stepping up at the end of the row through the first bead added.

Row 9 *Pick up two beads and pass through the next bead in row 8. Repeat from * 11 more times, for a total of 12 sets of two beads. At the end of the row, step up through the first two beads added.

Row 10 *Pick up one bead and pass through the next two beads in row 9 (treating them as one). Repeat from * to add a total of 12 beads. At the end of the row, step up through the first bead added.

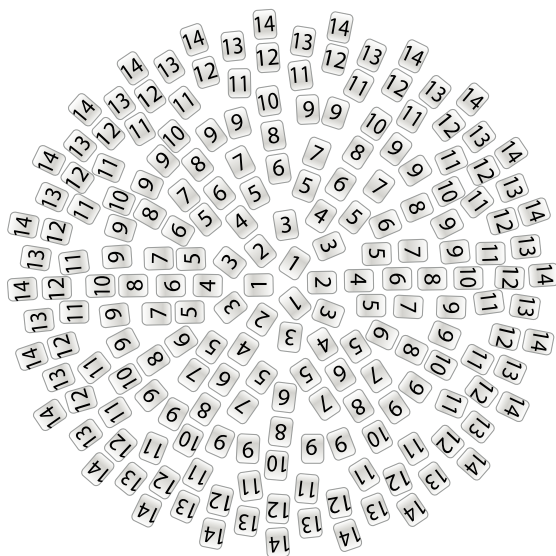


figure 1

SUPPLIES

Basic Beading Kit (page 11)

Size 11° cylinder beads:

Color A, sterling silver plated matte metallic, approximately 15 g

Color B, sterling silver metallic, approximately 7 g

Size 15° sterling silver round seed beads, 10 g

52 black semiprecious or crystal beads, 2 mm

3 black semiprecious stones, 3 mm

1 black faceted drop, approximately 10 x 15 mm

1 coin pearl, 10 mm

1 strand of 3-mm glass pearls

FINISHED SIZE

Pendant, 2½ x 2½ inches (5.4 x 6.4 cm)

Chain, 19 inches (48.3 cm) long

Row 11 *Pick up two beads and pass through the next bead in row 10. Repeat from * to add a total of 12 sets of two beads. At the end of the row, step up through the first bead added, splitting the pair.

Row 12 *Pick up one bead and pass through the second bead of the pair. Pick up one bead and pass through the first bead of the next pair. Repeat from * to add a total of 24 beads. At the end of the row, step up through the first bead added.

Rows 13 and 14 Work two rows of regular peyote stitch.

When row 14 is completed, set the piece aside and repeat rows 1 through 14 to make another disc with color A. Zip the two pieces together.

Repeat all instructions again to make a second end cap.

Build Up the End Points

In this step, you'll work with color B on one side of each of the double discs just created.

Row 1 With the thread exiting a bead on row 8 on one side of a disc as shown in figure 2, *pick up two beads and pass through the next bead in the row. Repeat from * to complete the row. Step up through the first two beads added (treat two beads as one).

Row 2 *Pick up one bead and pass through the next two beads in row 1. Repeat from * to complete the row. Step up through the first bead added.

Row 3 Pick up two beads and pass through the next bead in row 2. Repeat from * to complete the row. Step up through the first two beads added.

Row 4 *Pick up one bead and pass through the next two beads in row 3. Repeat from * to complete the row. Step up through the first bead added.

Row 5 *Pick up one bead and pass through the next up bead in the previous row. Repeat from * to complete the row.

Rows 6–9 Work four rows with regular peyote stitch, stepping up at the end of each row through the first bead added in that row.

Row 10 This is a decrease row. *Pick up one bead and pass through the next up bead, the next down bead, and then the next up bead. Repeat from * to complete the row. Step up through the first bead added.

Row 11 Pick up two beads and pass through the next up bead. Repeat so there are two beads in each decrease spot. Step up at the end of the row through the first two beads added.

Row 12 *Pick up one bead and pass through the next two beads. Repeat from * to complete the row. Step up through the first bead added.

Row 13 *Pick up one bead and pass through the next up bead in the previous row. Repeat from * to complete the row. Close up the top by passing through all the beads added in this row.

Repeat rows 1 through 13 on the second end cap.

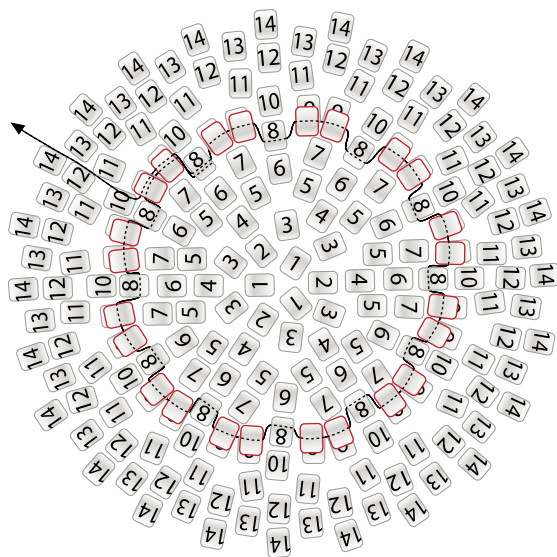


figure 2



Setup for the Tube

In this step you'll work with color B on the other end of each of the double discs, which now have one end built up.

Row 1 With the thread exiting a bead in row 8 on the other side of the disc (refer to figure 2 for the row setup), add two beads in each spot as you did for the top of the piece.

Row 2 *Pick up one bead and pass through the next two beads in row 1. Repeat from * to complete the row. Step up through the first bead added.

Row 3 *Pick up two beads and pass through the next bead in row 2. Repeat from * to complete the row. Step up through the first bead added, splitting the pair.

Row 4 *Pick up one bead and pass through the second bead of the pair. Pick up one bead and pass through the first bead of the next pair. Repeat from * to complete the row. At the end of the row, step up through the first bead added.

Rows 5–8 Work four rows with regular peyote stitch.

Row 9 This is a decrease row. *Pick up one bead and pass through the next up bead, the next down bead, and then the next up bead. Repeat from * to complete the row.

Row 10 Pick up two beads and pass through the next up bead. Repeat so there are two beads in each decrease spot. Step up at the end of the row through the first two beads added.

Repeat rows 1 through 10 for the other end cap.

► Tube

1 With the thread exiting a bead in row 10, which was just completed, and working with color A, *pick up one bead and pass through the next two beads. Repeat from * to complete the row. Step up through the first bead added.

2 Pick up two beads and pass through the next bead. Repeat from * to complete the row. Step up through the first two beads added.

3 Repeat these two rows until 27 rows are completed. The last row will be like the first: pick up one bead and pass through two beads.

4 Zip the tube to row 10 of the other end cap.

► Bail

The bail is made with two-drop peyote stitch consisting of eight sets of two beads in color A.

1 String on a stopper bead, then string on 16 beads. *Pick up two beads and make a flat peyote turn, skipping the first two beads and passing through the next set of two beads as shown in figure 3. Repeat from * to complete the row (figure 4).

2 At the end of the row, pick up two beads and make a flat peyote turn as shown in figure 5. Continue for about 36 rows and zip the two ends together to form a tube that will fit around your chain. Attach the bail to the tubular part of the component.



figure 3



figure 4

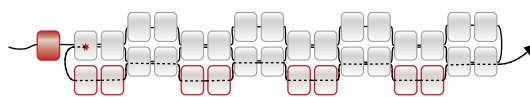


figure 5



► Embellish

You'll embellish the tube with 15° round seed beads, 2-mm semiprecious or crystal beads, and 3-mm crystals around the end caps and along the join to the bail. Refer to figure 6 for placement.

1 With the thread exiting a bead in row 9 on one end cap where the tube begins, *pick up three size 15°s and pass through the next bead in row 9. Repeat from * to complete the row.

2 Move to the seam between the two discs and stitch in the ditch with one 15°, one 2-mm bead, and one 15° for the entire row.

3 With the thread exiting row 9 on the outer disc where the built-up end begins, repeat step 2.

4 Embellish the seam where the bail meets the tube with a pattern of two 15°s, one 3-mm stone, three 15°s, one 3-mm crystal, three 15°s, one 3-mm crystal, and two 15°s.

5 To make a peyote stitch tube of 15°s, pick up eight beads and pass through them again to form a circle. Step up through the first bead added. Work even-count tubular peyote stitch until the tube is $1\frac{1}{16}$ inches (2.7 cm) long. Repeat to make a second tube. Attach one end of



With a simple color change, the Laksmi design takes on a completely different look.

a tube to the bottom of each outer disc of the end cap, and the other end to the center of the component.

6 Add the drop with a loop of 15°s.

► Chain

The chain is a double St. Petersburg made with 15°s, and the closure is a beveled coin pearl with two lengths of single St. Petersburg chain joined together to make a loop.

Use 15°s for all steps.

Refer to figure 7 for steps 1 through 3.

1 String on a stopper bead, pick up six squares, and pass through the third and fourth bead.

2 Pick up one 15° and pass back down through three squares.

3 Pick up one glass pearl and pass through the fifth and sixth square beads.

Continue with St. Petersburg chain to the length required.

4 To double the chain, start a new thread and repeat steps 1 and 2. Pass through the glass pearl on the first chain and through the two squares as shown in figure 8. *Pick up four squares and pass through the first and second beads. Pick up one 15° and pass back through three squares. Pass through the pearl and two squares. Continue from * until the chain is completed (figure 9).

5 At one end of the chain, make two lengths of single St. Petersburg chain to fit around the beveled pearl and ladder stitch them together to form a loop.

6 Attach the beveled pearl to the other end of the chain.

7 Slide the chain through the bail.

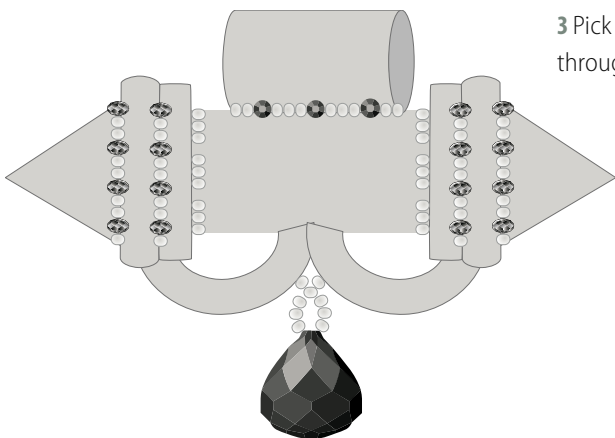


figure 6

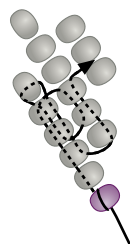


figure 7

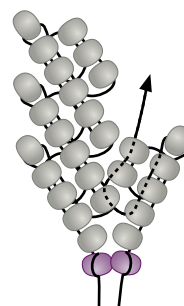


figure 8

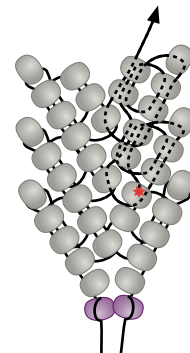


figure 9

Blanks

I used a brass blank for the Matriarchs' Cuff (page 31). The blank has a square indent in the center and the sides taper at the ends to a soft curve.



Tools

Here's more information about the items I always keep on hand.

Needles

There are many needle manufacturers. I prefer English beading needles because they're slightly thinner and don't break as easily as others.

Beading Needles

Beading needles come in a variety of sizes from 15 (thinnest) to 10 (thickest). I've even seen size 16 needles, but they're hard to come by. (I've often wished I had a size 16 when working with size 22° vintage beads!) I generally use size 10 beading needles with size 11° cylinder and round seed beads. I also use sizes 12 and 13 when working with smaller beads and semiprecious stones because it's easier to pass a thinner needle through the holes.

Sharps

These needles are shorter than beading needles, and although I don't like beading with them all the time, I love to use them when joining components or for getting into tight spaces because they don't break as easily as beading needles do.

Pliers

I always carry flat-nose pliers with me and use them to grab a needle that's stuck in a bead. Simply grasp the tip of a stuck needle and *gently* pull. I like to use the small version of these pliers.



Beading Surface

The velour bead mats sold at your local bead store are the most popular beading surface. They keep the beads from roaming. My favorite beading mat comes in a plastic case 11½ x 15 x 1 inches (29.2 x 38.1 x 2.5 cm). It has velour mats on both sides of the case and it snaps shut to hold a project in place.

Scissors

I use high-quality embroidery scissors to cut threads such as Nymo and One-G, and cheaper scissors for cutting braided beading threads, which will quickly dull the edges of the scissors.

Scoops

I use scoops to pick up little seed beads on the beading surface, and there are several styles on the market. My favorite is the metal triangle; it's easier to pick up beads with a metal edge than a plastic one. The points on the triangle are very sharp, so I often use a point to sort beads that have gone astray.



Task Lamp

My task lamp is as important as my beads. Nothing is more frustrating than not having good light when working! I use a portable full-spectrum task lamp both at home and on the road.

Press'n Seal

Some hollow beaded components need an armature or stuffing so they don't collapse. A few of the projects in this book have such components, which I stuff with Press'n Seal. It's designed as a plastic wrap but it also has some adhesive qualities that help in shaping components. I tear or cut small pieces, roll them into balls, and place them inside the components.

Storage Box

When I'm designing a project, more often than not the first few pieces are not exactly what I was looking for in terms of color or shape. I have a box (or two) that I store these pieces in. I visit this box periodically and often find new designs or components for a different project—what doesn't work for one often works for another.

Basic Beading Kit

In addition to the project-specific materials listed with each design, there are some things you should keep on hand for all of your beading projects. These are components of the Basic Beading Kit that appears at the head of the supply list for each project.

Size 10, 12, and 13 beading needles

Sharps needles

Thread in a variety of colors

Scissors

Thread conditioner

Beading surface

Scoops

Pliers

Good lighting