

This simple but beautiful pattern makes for a special gift. You can enclose another item inside for even more treasure.

treasure box



treasure box

before you begin

This project is shown in a monochromatic version. If you'd like to try making it with a combination of two or more colors, make a copy of the blank template on page 126 and fill it in with whatever design you'd like.

what you need

beads

11° seed beads, one color
(5,344 beads, or about 11 g)

8° seed beads, one contrasting
or complementary color
(544 beads, or about 1.1 g)

additional materials and tools

#12 perle cotton in a coordinating color

Nonwoven stabilizer

Lightweight lining fabric in a coordinating color

Sewing needle and ordinary sewing thread in a matching color

Small amount of polyester batting

Crochet hooks, beading needles, and long-handled scissors

what you do

crochet the base

1 Thread on 810 11° beads. Crochet a beaded hex base (page 28) that is 16 rounds out (96 stitches in the perimeter). Join at the end with a slip stitch; secure the thread within the crochet.

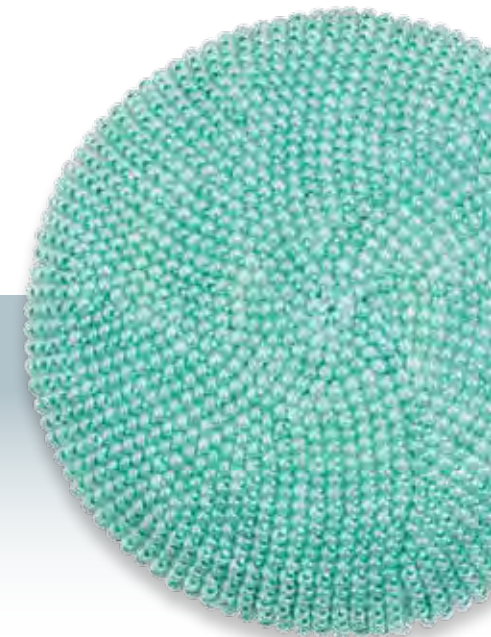
2 Following the stitch chart on page 71, thread on the 11° and 8° beads for the sides. This project is 35 rounds high; you can thread on five sections of seven rounds each. Pull up a loop anywhere in the outside round of the hex base.

3 Crochet the 35 beaded rounds without any increase. Add a six-round unbeaded hem.

crochet the box top

4 Thread on 1,734 11° beads.

5 Crochet a beaded hex base that is 17 rounds out (102 stitches in the perimeter). At this point, stop increasing; add eight rounds of single crochet with beads. Now add six rounds of unbeaded crochet.



view from the bottom



treasure box

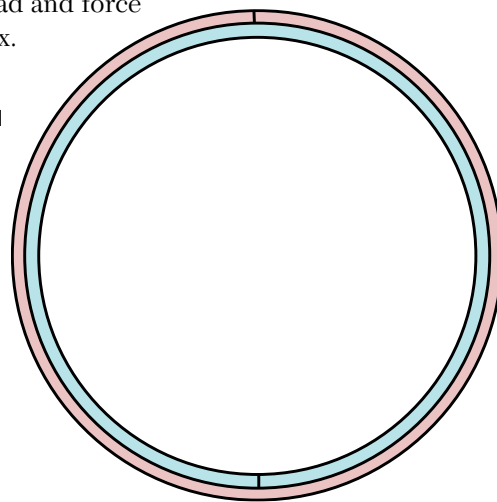
finish the box base

6 Cut two pieces of stabilizer that are roughly the same height as the box side, and roughly the same length as the circumference of the box base (photo 1).



7 Trim the two pieces so they fit together as shown in figure 1. The outside layer will be slightly larger than the inside layer. Baste the two pieces together with the sewing needle and ordinary sewing thread and force them inside the box.

figure 1



8 Stretch the crocheted box upward until the stabilizer is completely inside the crochet. Roll the hem over the edge of the stabilizer and turn it down inside the box. Baste the hem in place through all layers with the sewing needle and thread, making sure that the stitches are not visible on the outside (photo 2).



9 Bunch the lining fabric and push it down into the box until it touches the bottom of the box. Using long-bladed scissors, cut the bunched fabric about 1/2 inch (1.3 cm) above the top of the box (photo 3). The resulting cut edge will be rough.



10 Trim the roughly cut edge. It doesn't need to be perfect, just relatively smooth (photo 4).

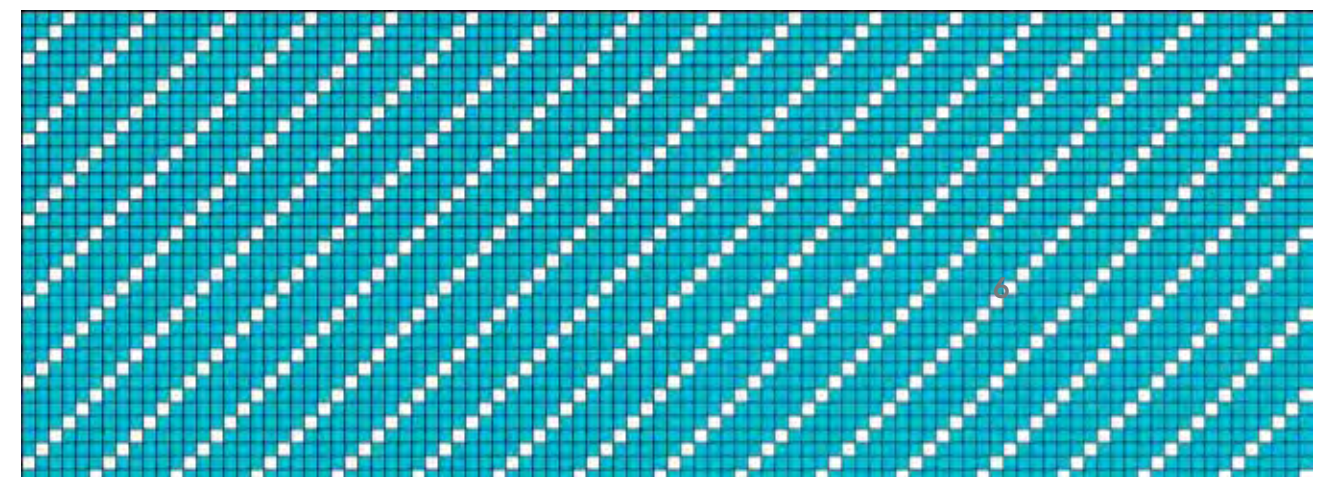


11 Run a gathering thread all around the perimeter of the lining, about 3/8 inch (9.5 mm) inside the edge (photo 5).



12 Gather the edge of the lining. Place the gathered lining inside the box. Fold the cut edge at the gather line so the edge disappears between the box and the lining. Sew the lining to the base along the top edge, using small invisible stitches.

stitch chart



finish the top

13 Cut a piece of stabilizer about the same diameter as the finished top (photo 6). Use the stabilizer as a template to cut a piece of lining fabric.



14 Baste the lining to the stabilizer around the outside edge (photo 7, below left).



15 Place the batting inside the crocheted top (photo 8).



16 Place the stabilizer and lining over the batting so the lining faces out. Fold the hem of the top inside and push it out so an edge is formed. Baste the edge all around with invisible stitches (photo 9).

making a hex base

The rounded designs in this book are all built on a hex base. As the name implies, this is a geometric stitching pattern based on six repeats. Because the thread is very flexible, the hex morphs into a circular shape. If you're working in only one color, follow the project directions for the number of rounds and the color of the beads to be used. If there's a pattern involved, you'll follow a charted design like the one at right.



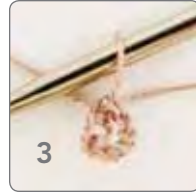
1

Chain six



2

Join with a slip stitch



3



4

Chain one



5

Make six single
crochet in the ring



6

Catch the initial
tail thread in the
single crochet



7

Hex bases are begun with an unbeaded chain of six (photo 1). You'll join this chain into a ring with a slip stitch (photo 2 and 3). Make one chain (photo 4), then make six single crochet with beads in the ring (photo 5). As you make these single crochet, catch the tail thread in the stitch, making sure not to split the tail thread with your hook (photo 6). You'll use this encased thread later like a cinch to neaten the center of the hex. Join the round, and step up.

Now make only one single crochet with bead in the same space (the first stitch in the previous round). Make two in the second stitch. You've now increased two stitches to three. Make one single crochet in the next, and two in the stitch after that. Repeat this one-two pattern all around, then join the round.

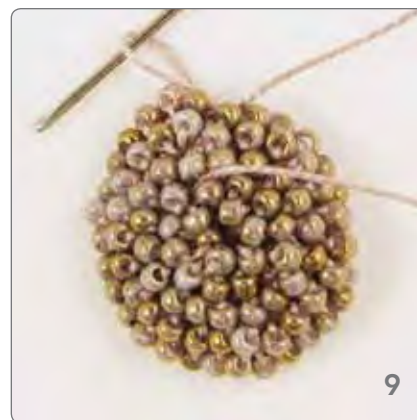
Now you'll step up, as you will at the start of every new round. The step-up in the hex base is the same as in a flat piece. Join the last single crochet to the first with a slip stitch. Start the round by making one single crochet with a bead in the same space as the slip stitch. Now you'll make another single crochet with a bead in the same space, increasing one stitch to two. Make two single crochet with beads in the remaining five single crochet of the round (photo 7).

Step up again; make one single crochet with a bead in the first stitch, then two single crochet with bead in the next. Notice how all the increases in the hex rounds will take place in the second stitch of the increase in the previous round.

Now you'll make use of that encased tail thread. Photo 9 shows how the outside will look before you tighten the tail thread. Photo 10 shows how the outside looks after the thread is tightened. As you can see, it makes quite a difference in the appearance.



8



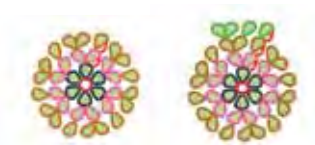
9

Tail thread unpulled

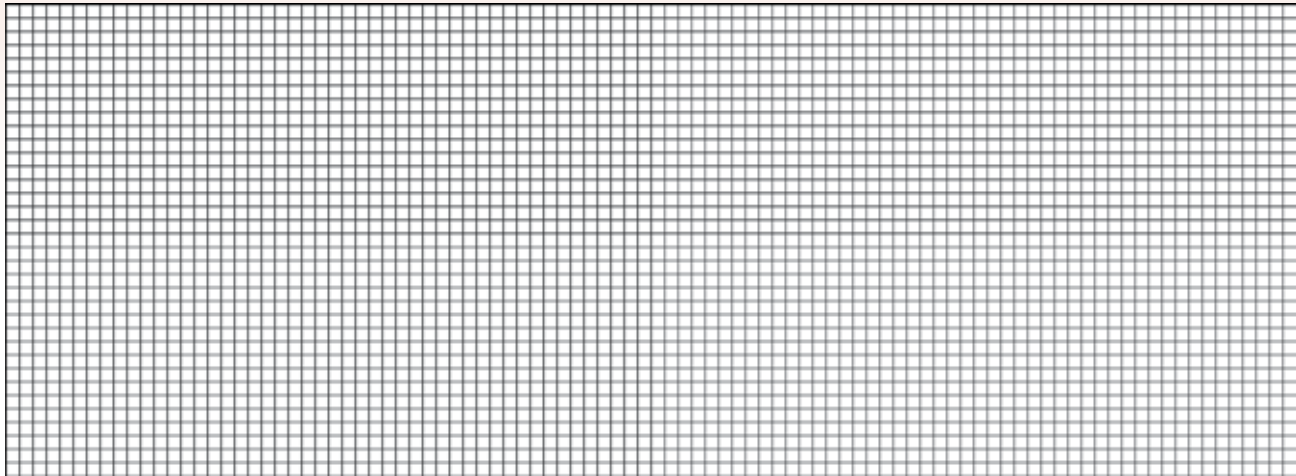


10

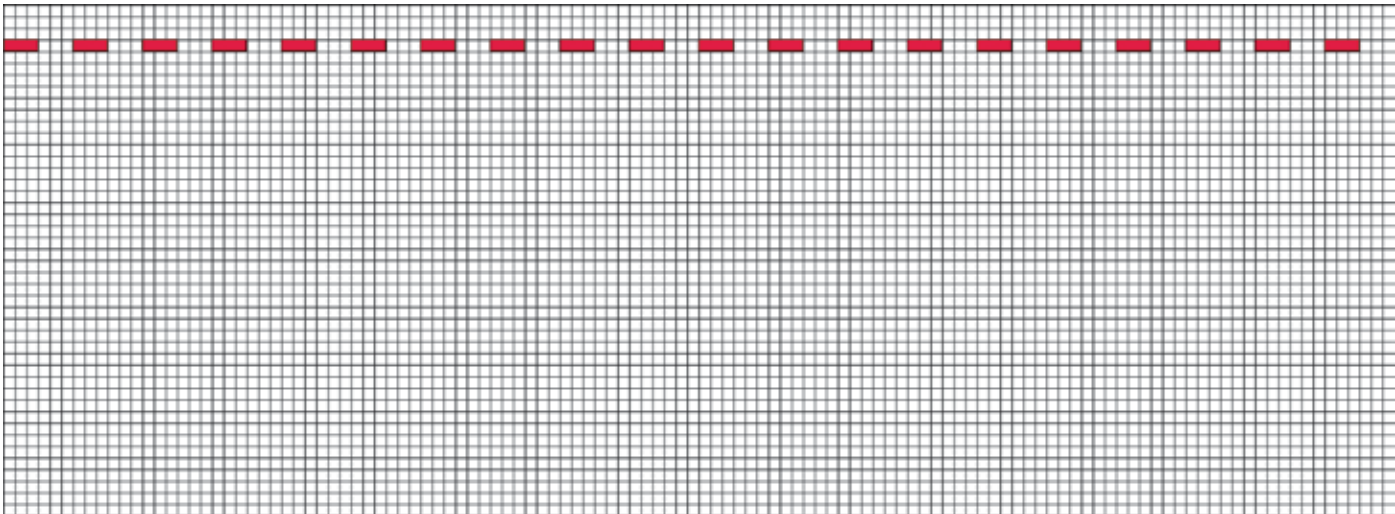
Tail thread pulled



design charts



TREASURE BOX



PINEAPPLE DRAWSTRING BAG